



Speed controller type ST2R4

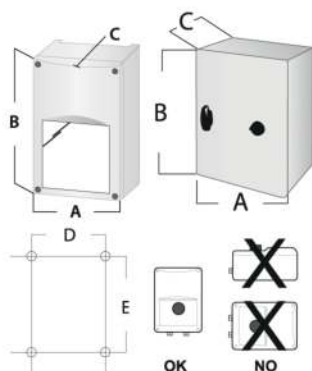
2-speed transformer controller with built-in clock in accordance with IDA-C3

Application

- With the built-in clock these controllers can work completely autonomously. Two optimal motor speeds can be selected. These high and low speed operation time range can be programmed in the clock together with a range when the motor has to stop. This permitting a energy save.
- They are fitted out with TK contacts for thermal motor protection and run/stop contacts for external or remote starting/stop.

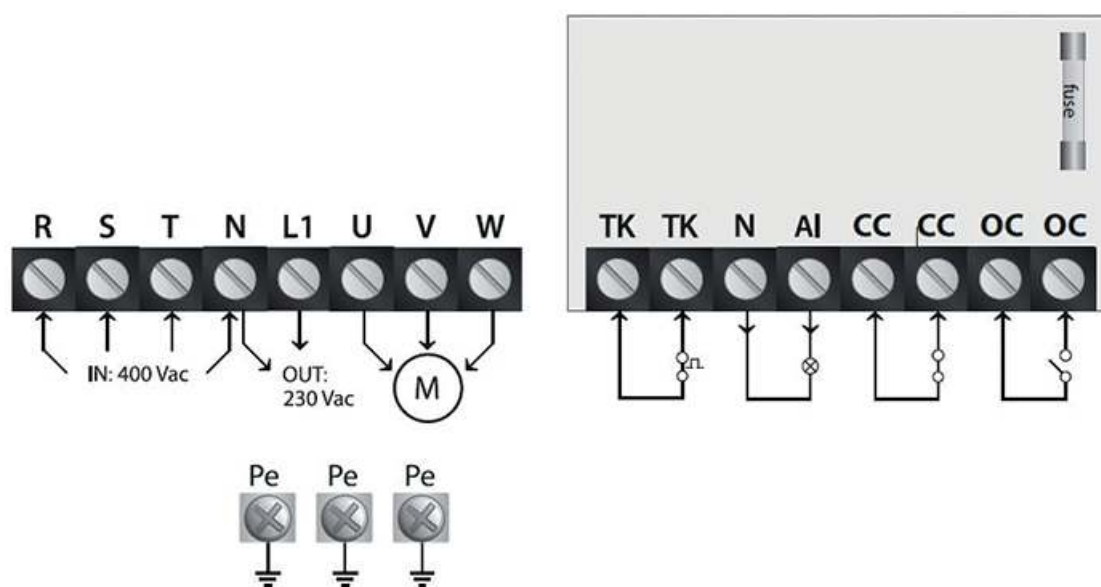
Composition

- Voltage: 400 Vac – 50/60Hz – from 1.5 to 11A
- Enclosure: sheet steel RAL 7032, polyester powder coating IP54
- Several voltage ranges possible
- Current fuse
- 230 Vac unregulated output
- Motor protection, by connecting thermal contacts TK of the motor
- Alarm output (230V/1A) in the event of motor overheating
- 2 run/stop contacts (RT-normally closed, FS-normally open) for remote control
- Ready mounted cable glands
- Maximal ambient temperature: 35°C



	Dimensions									
	A [mm]	B [mm]	C [mm]	D [mm]	E [mm]	Wgt net [kg]	Wgt brut [kg]	M	I _{max} [A]	F(A)
ST2R4-15L55	300	325	150	255	255	12,15	12,61	P	1,5	2,5
ST2R4-25L55	300	325	150	255	255	13,23	13,69	P	2,5	4,0
ST2R4-40L55	300	425	200	255	255	19,98	20,57	P	4,0	5,0
ST2R4-60L55	400	430	200	355	355	25,02	25,80	P	6,0	8,0
ST2R4-80L55	400	430	200	355	355	29,67	30,45	P	8,0	12,5
ST2R4110L55	400	430	200	355	355	36,27	37,05	A	11	(6x32mm)16,0

Wiring diagram



Notes

L = Main supply 230Vac - 50/60 Hz
 L1 = Unregulated output
 N = Neutral
 U = Regulated output to motor
 AI = output to alarm
 TK = Thermisch contact
 RT = Room thermostat (normally closed)
 FS = Frost protection (normally open)
 Pe = Earthing