

SVA (RAL9016)

- Air valves
- Steel
- White, RAL 9016
- Pulsion



Steel supply valves type SVA (RAL9016)

Air supply valve with adjustable core

Brand

- Cairox

Application

- For air supply in ventilation systems

Material

- Steel

Colour

- Standard colour white, RAL 9016

Composition

- Pressed steel body with adjustable core, supplied with galvanized steel mounting frame

Mounting

- Fixing by clips in the mounting frame
- Can also be used for direct mounting into round ducts (with or without mounting frame)

Accessories

- Mounting ring **TR** for clamping the mounting frame on tile ceiling plates

Order example

- **SVA, 125**

Explanation

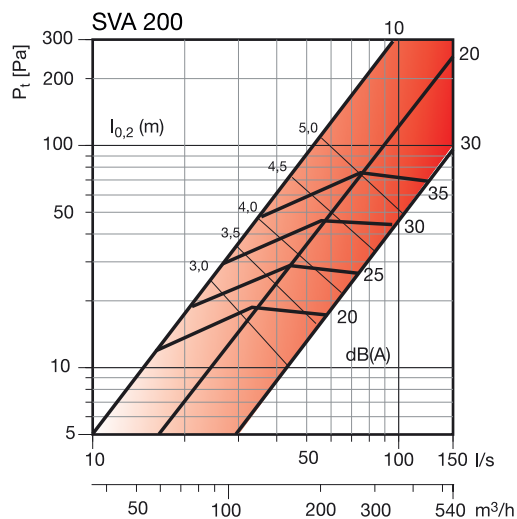
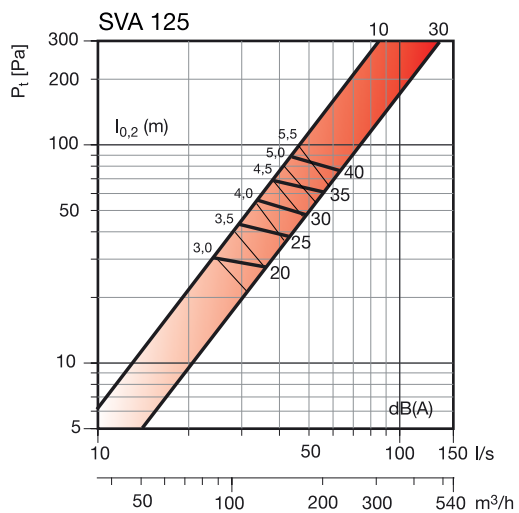
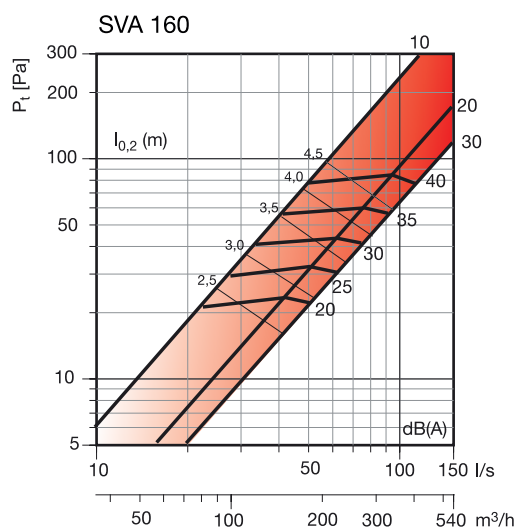
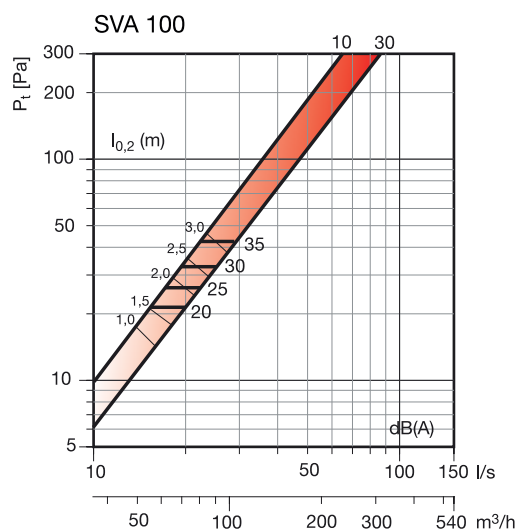
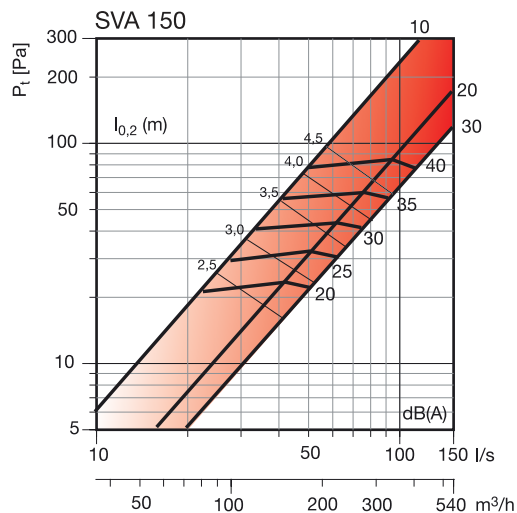
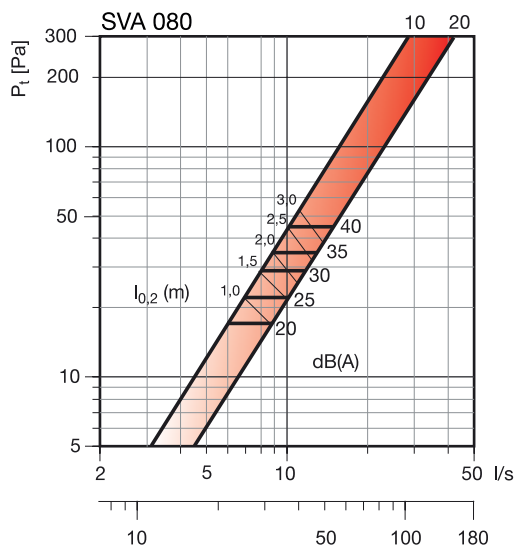
SVA = Type valve (incl. mounting frame)

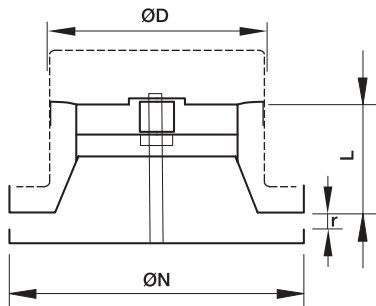
125 = Connection diameter

Symbols and specifications

- Q = Air volume in m³/h
- Ps = Static pressure loss in Pa
- X0.20 = Horizontal throw at end velocity of 0.20 m/s in m
- Lw(A) = Acoustic power in dB(A), based upon measured Lp acoustic pressures increased by 4 dB(A) room attenuation
- r = 10 mm, 30 mm = Gap between the central core and the valve body

Selection Graph





Dimensions			
	ØD [mm]	ØN [mm]	L [mm]
SVA 100	100	135	60
SVA 125	125	160	60
SVA 160	160	195	60
SVA 200	200	238	63