



## Centrifugaal ventilator type VMI

Dubbelaanzuigende centrifugaal ventilator. Het gamma bestaat uit 6 groottes en 7 types voor debieten van 500 tot 9000 m<sup>3</sup>/h.

### Toepassing

- De **VMI** ventilatoren worden gebruikt voor pulsie en extractie van burelen, horecazaken, winkels, enz.

### Samenstelling

- Slakkenhuis van gegalvaniseerd plaatstaal
- Dubbel aanzuigende waaier met voorwaarts gebogen schoepen, directe aandrijving
- Motor met beveiliging tegen oververhitting, isolatieklasse F, beschermingsklasse IP44
- Spanning: 230Vac 1ph of 400Vac 3ph
- Geschikt voor snelheidsregeling

### Accessoires

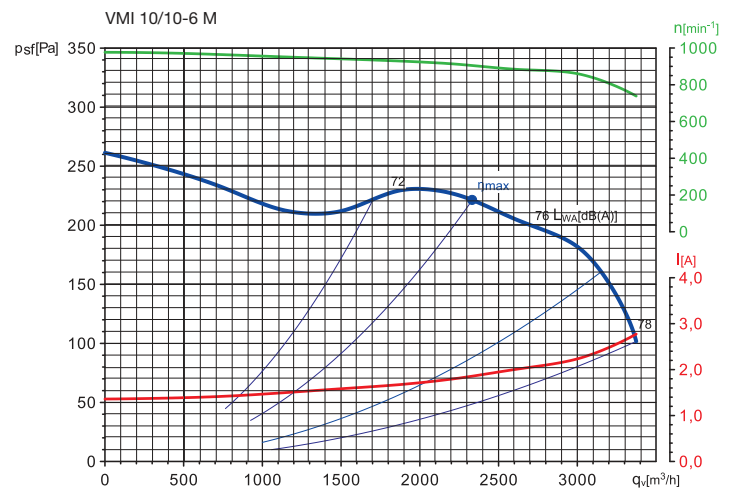
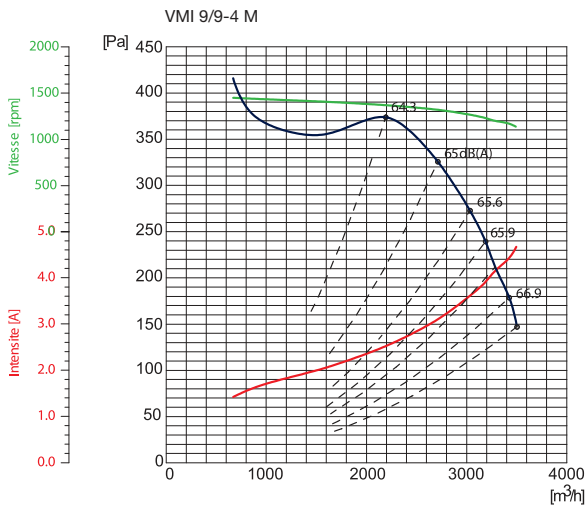
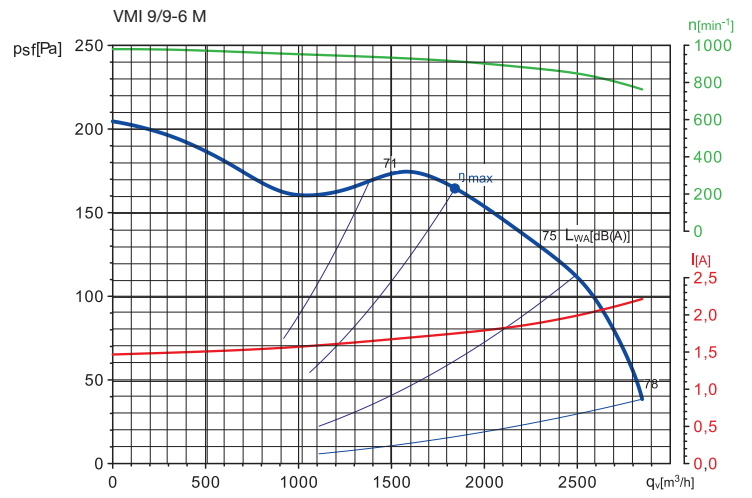
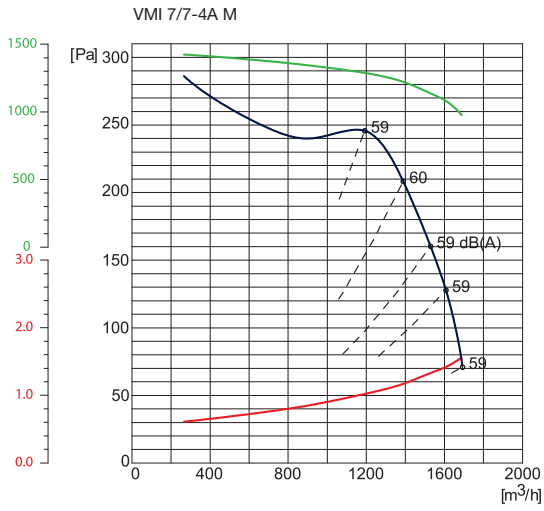
- 5-standen schakelaar, type BTRN of BTRNTK
- Frequentieregelaar 230V in / 3x230V uit, type FIS-13
- Frequentieregelaar 3x400V in / 3x400V uit, type FIS-44

	Luchttechnische specificaties														
	Q [m <sup>3</sup> /h]														
	50 Pa	100 Pa	150 Pa	200 Pa	250 Pa	300 Pa	350 Pa	400 Pa	450 Pa	500 Pa	550 Pa	600 Pa	650 Pa	700 Pa	750 Pa
VMI 7/7-4A M	-	1700	1650	1450	750	-	-	-	-	-	-	-	-	-	-
VMI 9/9-6 M	2800	2600	2100	-	-	-	-	-	-	-	-	-	-	-	-
VMI 9/9-4 M	-	-	3530	3375	3150	2800	2525	700	-	-	-	-	-	-	-
VMI 10/10-6 M	-	3350	3175	2750	350	-	-	-	-	-	-	-	-	-	-
VMI 12/9-6 M (ErP 2015)*	5750	5500	5210	5050	4800	4100	-	-	-	-	-	-	-	-	-
VMI 12/9-6 M	-	-	-	4680	4150	3500	860	-	-	-	-	-	-	-	-
VMI 12/12-6 M	-	-	-	-	4850	2000	685	-	-	-	-	-	-	-	-
VMI 12/12-6 T	-	-	-	6550	5750	4680	1450	935	-	-	-	-	-	-	-
VMI 15/15-6 T	-	-	-	-	-	-	9000	6625	5000	1310	435	-	-	-	-
VMI 18/18-6 T	-	-	-	-	-	-	-	-	-	-	-	12800	5000	3500	2680

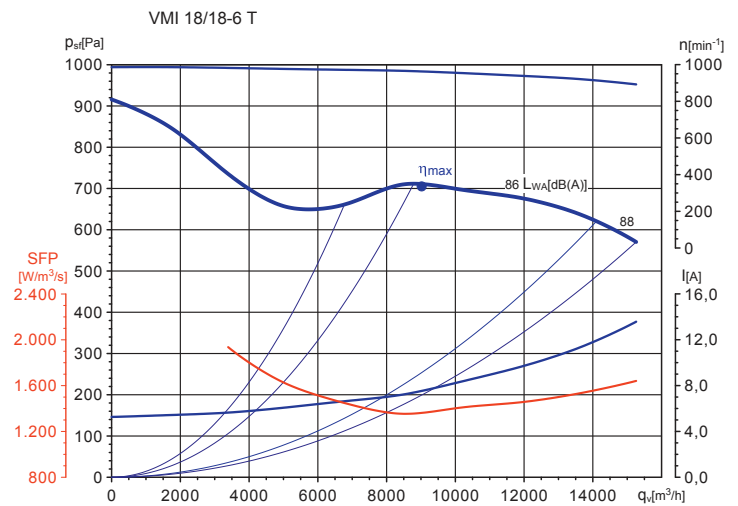
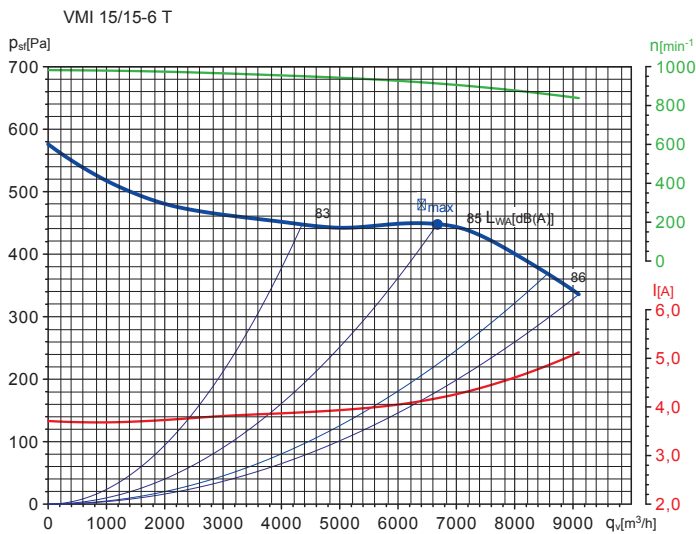
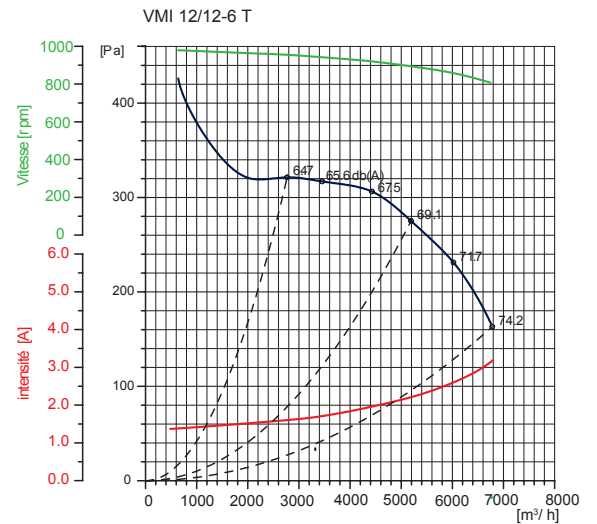
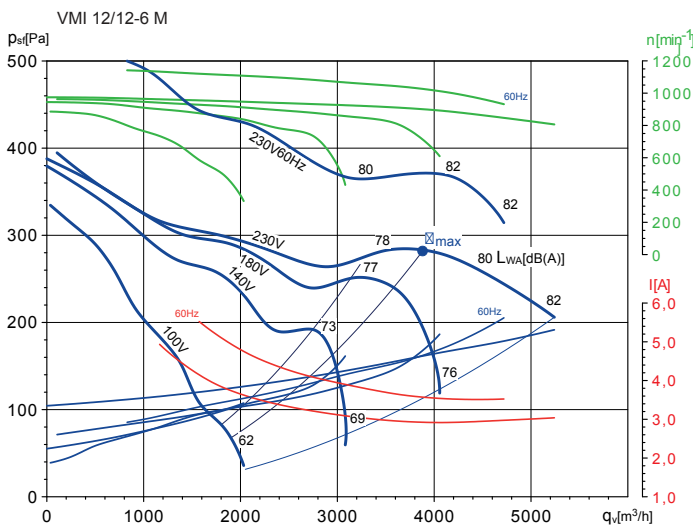
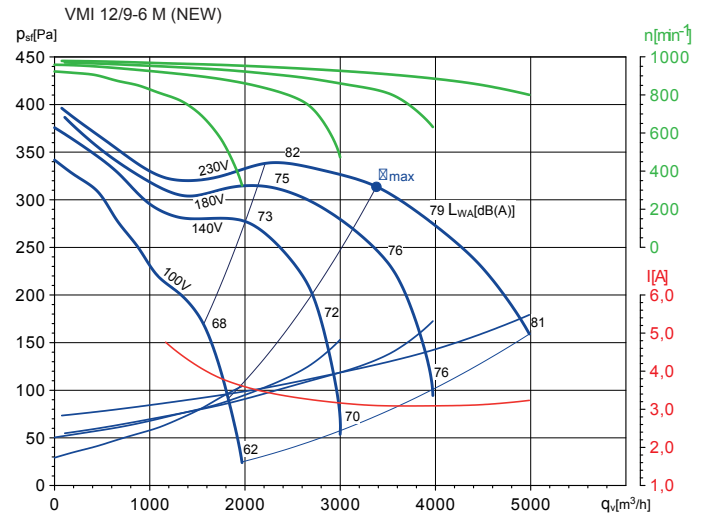
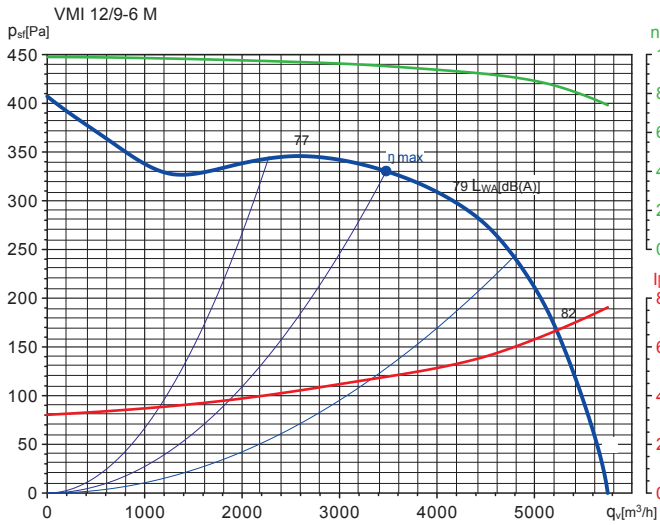
### Let op

De VMI ventilator mag nooit vrijaanzuigend gebruikt worden, minimum tegendruk voorzien volgens tabel. Gelieve de stroom te meten bij opstart.

### Selection curves



Selection curves



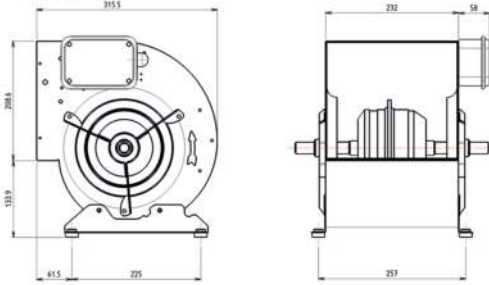
Technische gegevens								
	U [V]	P [W]	I [A]	SC <sub>T</sub>	t <sub>m</sub> [°C]	IP	n [rpm]	Lpa <sub>max</sub> [dB(A)]
VMI 7/7-4A M	1 x 230	147	1,6	BTRN-1-2	40	55	1420	59
VMI 9/9-6 M	1 x 230	245	2,2	BTRN-1-3	40	55	960	78
VMI 9/9-4 M	1 x 230	550	4,6	BTRN-1-5	40	55	1420	67
VMI 10/10-6 M	1 x 230	245	2,8	BTRN-1-3	40	44	980	78
VMI 12/9-6 M (ErP 2015)*	1 x 230	736	7,6	BTRN-1-10	40	44	980	84
VMI 12/9-6 M	1 x 230	750	5,5	BTRN-1-7	40	55	913	79
VMI 12/12-6 M	1 x 230	750	5,6	BTRN-1-7	40	55	899	81
VMI 12/12-6 T	3 x 230/400	1100	5,2 / 3	BTRN-3-7 / BTRNTK-4-40	40	44	980	74
VMI 15/15-6 T	3 x 230/400	2200	8,83 / 5,1	/	40	44	990	86
VMI 18/18-6 T	3 x 230/400	4000	23,9 / 13,6	/	40	44	964	88

SC<sub>T</sub> = transformatorregelaar

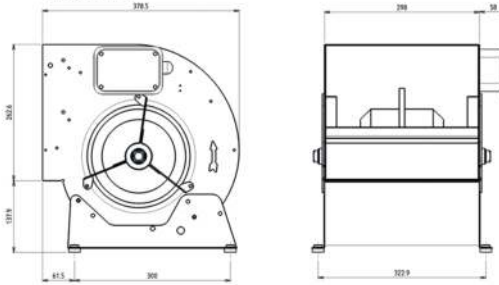
t<sub>m</sub> = maximum temperatuur van de lucht

Lpa = Geluidsdruk

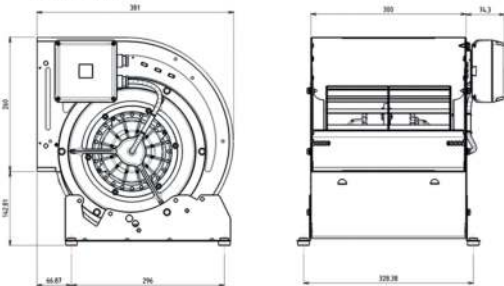
VMI 7/7-4A M



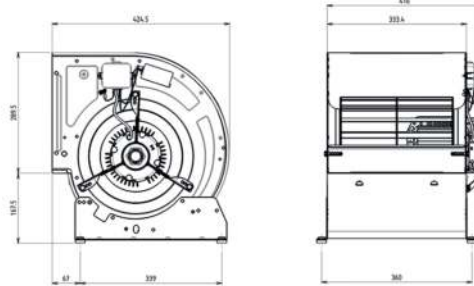
VMI 9/9-4 M



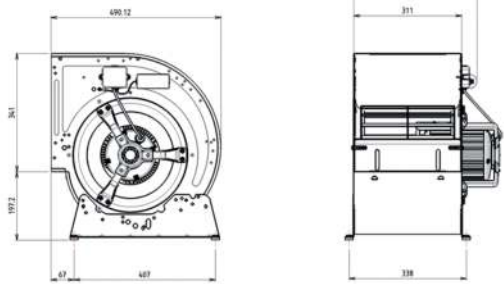
VMI 9/9-6 M



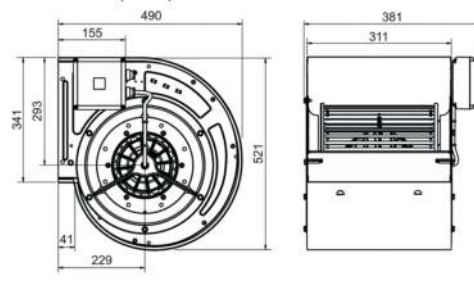
VMI 10/10-6 M



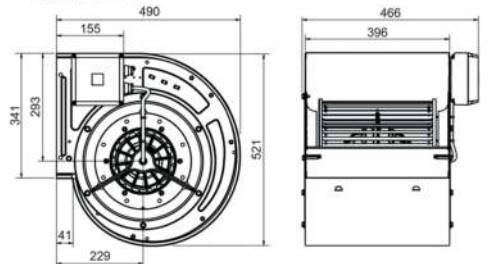
VMI 12/9-6 M



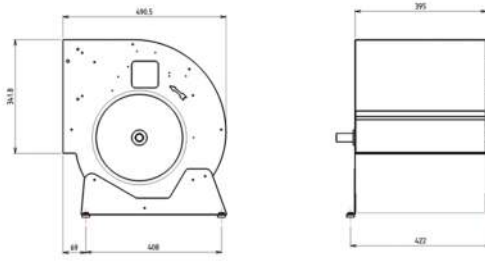
VMI 12/9-6 M (NEW)



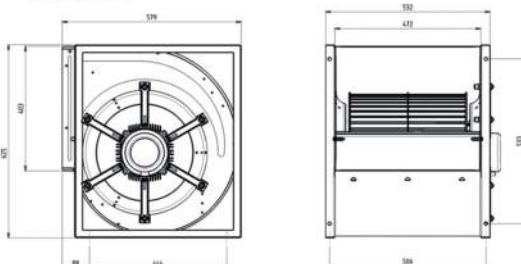
VMI 12/12-6 M



VMI 12/12-6 T



VMI 15/15-6 T



VMI 18/18-6 T

